



Grade 1 Term 1

Sample Test

Name: _____

Class: _____

Date: _____

Mark Sheet

	mark	out of
Listening Part1		4
Reading Part 1		4
Writing Part 1		4

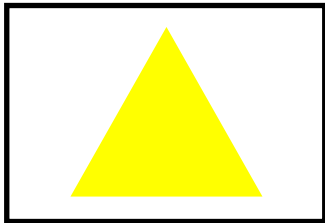
Listening

Part 1

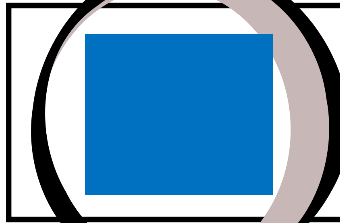
Listen and circle the picture.

Example:

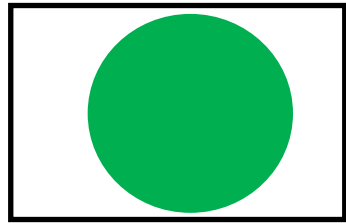
a.



b.



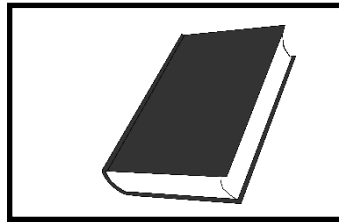
c.



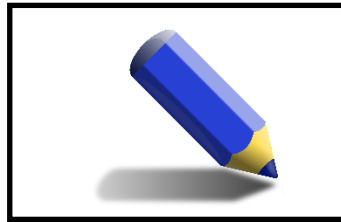
1. a.



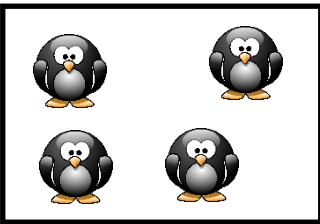
b.



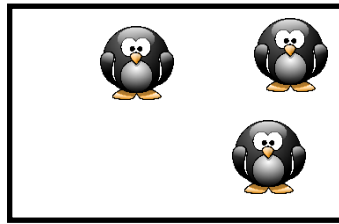
c.



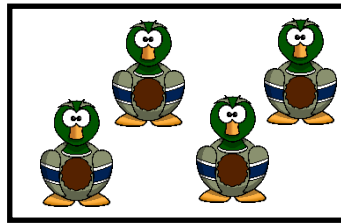
2. a.



b.



c.



3. a.



b.



c.



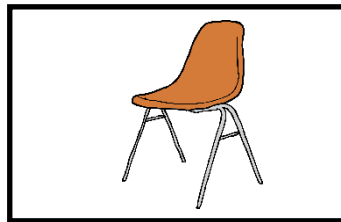
4. a.



b.



c.



Reading

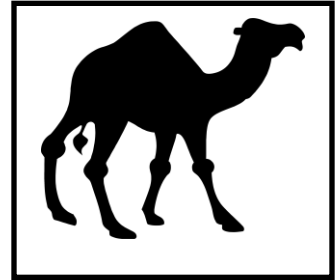
Part 1

Look at the picture and answer the question.

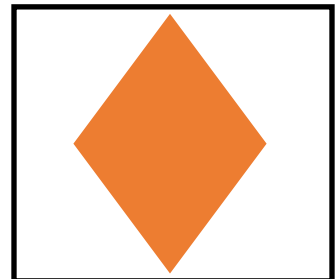
Circle **yes** or **no**.

Example: Is it a camel?

☒ yes / no



1. Is this an orange diamond? yes / no

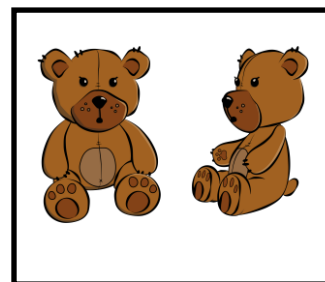


2. Is it a cactus? yes / no



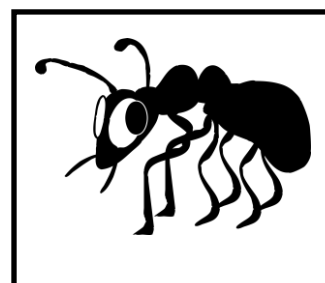
3. Is this hard?

yes / no



4. Is it an ant?

yes / no



/4

Writing

Part 1

Look at the picture.

Write a letter in the gap.

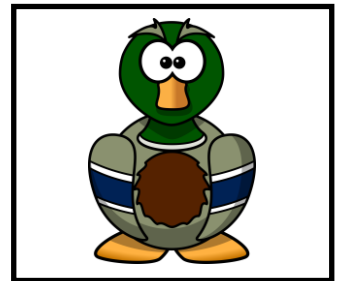
Example:

c a t



1.

___ u c k



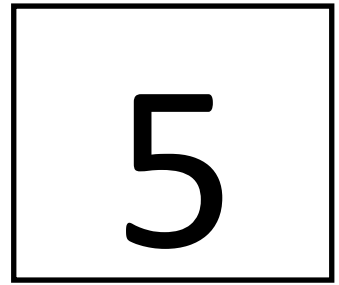
2.

u ___ b r e l l a



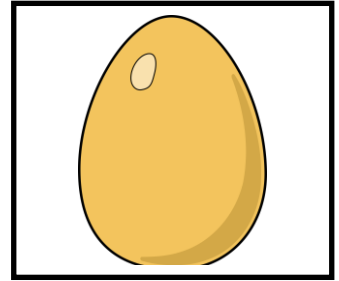
3.

f ____ v e



4.

e ____ g



/4